

Jupiter Festival of Bands

2016 Competition Schedule
October 29, 2016

* 2015 Festival of Bands Grand Champion
+ Opting to compete in a higher class

JupiterBands.com
FINAL SCHEDULE (10/24/16)

High School	Class	Warm-Up Area	Warm-Up Time	Travel Time	Gate Time	Performance Time	
Welcome / National Anthem						4:30 PM	
1	Lake Highland Preparatory	1A	A	3:40 PM	4:20 PM	4:30 PM	4:45 PM
2	Harmony	2A	B	3:55 PM	4:35 PM	4:45 PM	5:00 PM
3	Western	2A	C	4:10 PM	4:50 PM	5:00 PM	5:15 PM
4	Ronald W. Reagan/Doral	2A	A	4:25 PM	5:05 PM	5:15 PM	5:30 PM
5	Seminole Ridge	2A	B	4:40 PM	5:20 PM	5:30 PM	5:45 PM
6	* John I. Leonard	3A	C	4:55 PM	5:35 PM	5:45 PM	6:00 PM
Dinner Break (55 minutes)						6:15 PM	
7	Coral Springs	4A	A	6:05 PM	6:45 PM	6:55 PM	7:10 PM
8	John A Ferguson	1A	B	6:20 PM	7:00 PM	7:10 PM	7:25 PM
9	Cooper City	5A	C	6:35 PM	7:15 PM	7:25 PM	7:40 PM
10	J.P. Taravella	5A	A	6:50 PM	7:30 PM	7:40 PM	7:55 PM
11	Okeechobee	5A	B	7:05 PM	7:45 PM	7:55 PM	8:10 PM
12	+ Palm Beach Central	5A	C	7:20 PM	8:00 PM	8:10 PM	8:25 PM
13	Jupiter	EXH	A	7:35 PM	8:15 PM	8:25 PM	8:40 PM
Band Directors: Judges' Critique (Media Center) Pick Up Recaps (Media Center)		Seminole Ridge vs. John I. Leonard Drum Line Battle and Jupiter Drum Line Exhibition				8:55 PM	
		Halloween Bash				9:15 PM	
Awards Ceremony						9:30 PM	



2016 Jupiter Festival of Bands – General Information

Directors: Please READ and pass it on to your staff, parents, and students

FOOD AND DRINK CONTEST POLICY

There is absolutely NO cooking or meal preparation on school grounds. This also includes coming to the show with food for your group. Moreover, you are not allowed to order food from an outside vendor to be delivered to the school. Failure to abide will result in a penalty assessed to your score. Please have your students eat at our concession stand, which will be open all day.

BAND CHECK-IN / ARRIVAL / BUS INFORMATION (Daniel's Way entrance)

The JHS Daniel's Way entrance off of Indiantown Road will be clearly marked for the entrance of your buses. (See separate *Directions to Jupiter High School* for driving instructions.) Follow Daniel's Way towards the stadium to find the Band Check-In tent. Wristbands will be distributed to your allotted chaperones and staff at that time. Buses will be directed to parking. **THERE CAN BE NO PLAYING OF ANY INSTRUMENTS IN THE BUS PARKING AREA!!!**

Each band will be assigned three band guides for the day for horn line, percussion and auxiliary. Band guides will escort bands to all warm up areas, field gates, buses and stadium seating. These guides will be your primary contact during the competition.

EQUIPMENT TRUCKS / TRAILERS (Military Trail entrance)

Equipment trucks/trailers should use the main JHS entrance and park in the right/north parking lot closer to the football field. **THERE CAN BE NO PLAYING OF ANY INSTRUMENTS IN THE EQUIPMENT PARKING AREA!!!** Please allow enough time to unload, pick up equipment, and travel to warm up spot.

WRISTBANDS

Band Director, staff member, and chaperone wristbands are provided in your director packet upon arrival. Director and Director's guest wristbands are a different color from the others. Staff wristbands are totaled based on the information provided during online registration and confirmed for the Festival program. Chaperone wristbands are provided based on one (1) wrist band for every ten (10) students in your group. An additional ten (10) chaperone wristbands can be purchased at Band Check-in for \$10 each (cash only) ONLY when your band checks in. **NO ONE will be allowed admittance to the stadium without a wristband.**

SPECTATOR TICKETS & PARKING

Adults: \$15.00; Children 12 and under: \$12.00; Children 5 and under are free. The ticket window is at the main entrance to the stadium and opens at 3:00 PM. A donation of \$5 is requested for parking.

DIRECTOR HOSPITALITY ROOM

The Hospitality Room is located in the 3000 building west of the cafeteria in the Staff Dining Room. **This room is for Directors and ONE guest of their choice as identified by wristbands.** Snacks and beverages will be available in the Hospitality Room. This is a place for you and other special guests of our program. We appreciate your cooperation in the use of this room.

VIDEO

You are free to invite your own videographer to record your performances. Please use the attached videographer pass to gain access to the press box area. We do ask that you limit the number of passes you distribute to one person per band.

AFTER PERFORMANCE POLICY

It is expected that all performers remain with their Director(s) and/or chaperones and remain in full or half uniform while at the show.

STADIUM SEATING

Bands will be seated by their assigned band guides. Please do not take equipment to the stands so we can use all the seating space for student seating.

WATER

Water stations are located at every warm up area and at field exit. Feel free to bring additional water for your group.

CRITIQUE

Band Directors are invited to a critique with our judges immediately following the Jupiter HS Band exhibition performance. Critique will be held in the Media Center, which is where directors can pick up recaps.

EVENT STAFF

Most of our volunteers will be easily recognizable in our "Event Staff" t-shirts, JHS Band show shirts, or JHS Band polo shirts. Please feel free to ask any volunteer for assistance. If they cannot answer your question directly, they will locate someone who will.

FIRST AID STATION

The First Aid Station is located next to the band performance EXIT gate and water station. This station is staffed by volunteer paramedics prepared to address medical situations that occur on school grounds.

CONCESSIONS / BAKE SALE / KONA ICE

NO SEPARATE LINE FOR TICKETS! We have a wide variety of menu items, including veggie burgers, funnel cakes and fried Oreos! (See separate *Concessions Menu* for items and prices.) Stop by our Bake Sale for delicious homemade treats! **Prepaid meals for bands can be picked up at Visitors Side Concessions.**

PROGRAMS

FULL COLOR programs are available for \$3.00.

HAPPY GRAMS

Happy Grams are available for \$3.00 each or 2 for \$5.00. All Happy Grams will be read just prior to your band's performance.

SCARIEST BAND DIRECTOR

Submit your vote for the Scariest Band Director for \$1 at the Happy Grams table. The winner will receive a trophy during Final Retreat.

WOODEN ROSES

Wooden flowers in many colors will be sold for \$1 each or six for \$5.

CASH ONLY

The Jupiter Festival of Bands can only accept cash for purchases. Please see the included list of nearby ATMs for your banking convenience.

ADJUDICATORS

Keith "Ping" Dawson, Alan "Al" Chez, Doug Moser, Paul Cullen, Brian Mora, Patrick Stewart, James Smith, and Ralph Venezia are the adjudicators for the Jupiter Festival of Bands.

SCORING

Music Performance Ensemble - 20 points

Music Performance Field - 10 points

Visual Performance Ensemble - 20 points

TOTAL: 100 points

Visual Performance Field - 10 points

Music General Effect - 20 points

Visual General Effect - 20 points

AWARDS

Participation Awards

Scariest Band Director

Drum Line Battle Winner

Best in Class Captions: Auxiliary, Percussion, Visual Performance, Music Performance, and General Effect

Class Placement: 1st, 2nd and 3rd place

Best Overall Captions: Auxiliary, Percussion, Visual Performance, Music Performance, and General Effect

2nd Place Runner Up

Grand Champion

BAD WEATHER

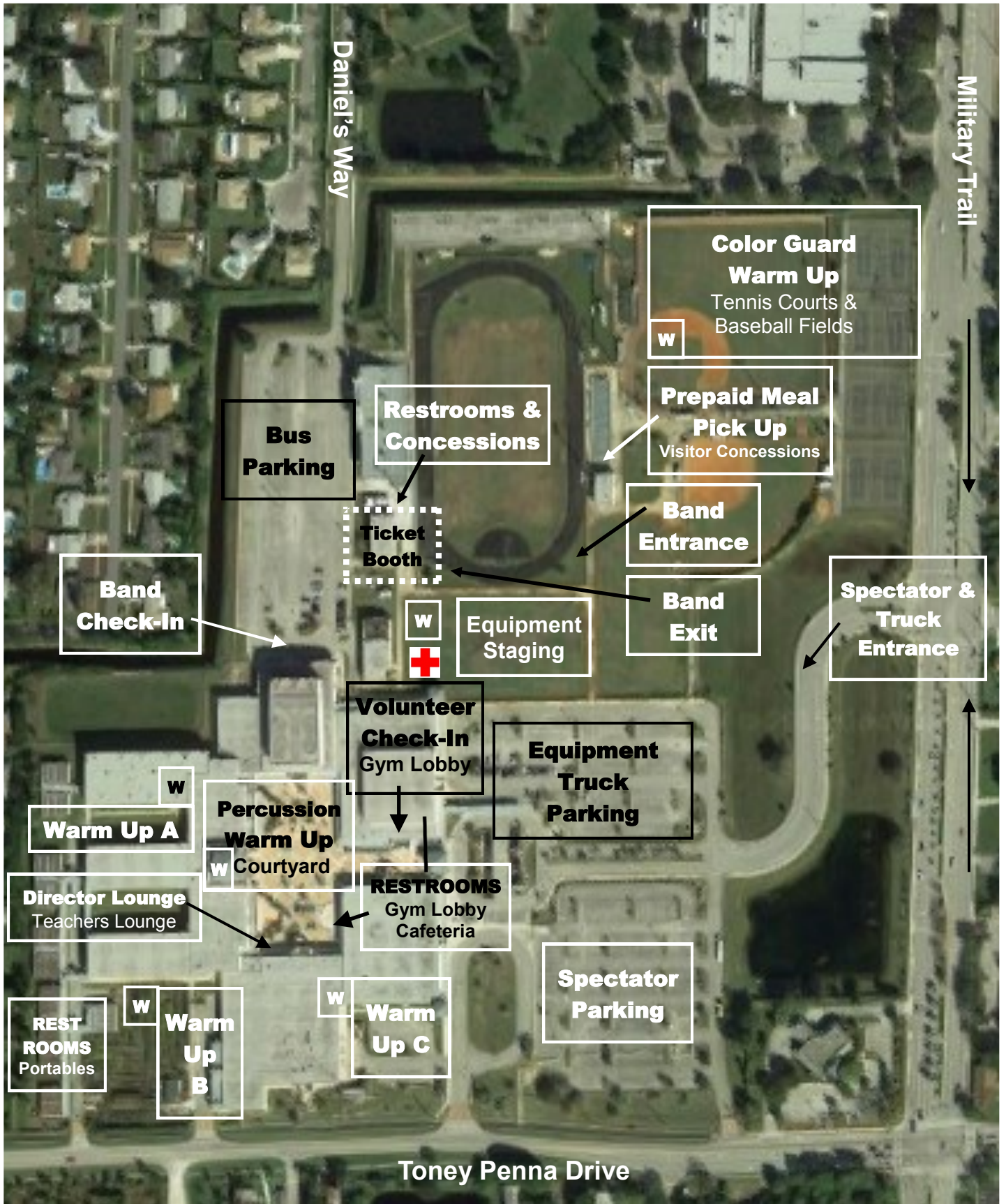
In the event of bad weather, the bands will be placed in a holding area under shelter, warm-up areas will be assigned, and the performance will take place in the gymnasium.

WEBSITE INFORMATION

This information is available at www.JupiterBands.com/Festival-of-Bands

Scores and recaps will be posted on www.FloridaBandTournament.com

Jupiter Festival of Bands Campus Map - October 29, 2016



BAND BUS entrance located on Daniel's Way on south side of Indiantown Road just west of Military Trail

BUS OVERFLOW parking available in JHS bus loop off of Toney Penna Drive

SPECTATOR / EQUIPMENT entrance located on the west side Military Trail just south of Indiantown Road

ALL band sections except front ensemble will enter the field on the SE side of the stadium and exit on the SW side

WATER STATIONS located at all warm up areas and band exit at the stadium

JHS Warrior Band Concession Menu

(All prices are subject to change without notice, menu items are subject to availability)

FOOD PURCHASES ARE CASH ONLY

Entrees	
Chicken Strips	\$5.00
Hamburger	\$5.00
Cheeseburger	\$5.00
Veggie Burger	\$5.00
Hot Dog	\$4.00
Pizza (1 slice)	\$3.00
Sides	
Nachos	\$3.00
French Fries	\$3.00
Cheese Fries	\$4.00
Pickles	\$1.00
Desserts/Snacks	
Fried Oreos	\$4.00
Funnel Cake	\$4.00
Popcorn	\$2.00
Candy Bars	\$1.00
Drinks	
Soda (Coke, Diet Coke, Sprite)	\$1.00
Water	\$1.00
Gatorade	\$1.00

